

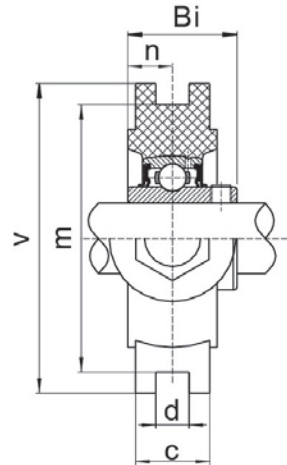
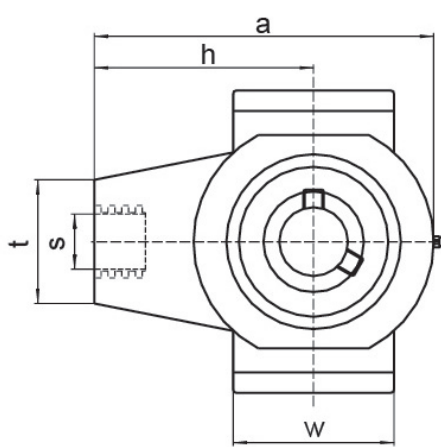


CORROSION RESISTANT PRODUCTS



THERMOPLASTIC TAKE-UP UNIT - Stainless Steel Insert SSUCTPT 200 Series

Normal Duty
Set Screw Locking
Wide Slot Width



Unit No.	Shaft Dia.		Dimensions inch / mm											Bearing No.	Housing No.	Weight Lbs / kg
	In.	mm	a	c	d	h	m	t	v	w	Bi	n	s			
SSUCTPT201-8	1/2													SSUC201-8		
202-10	5/8		3-57/64	1-5/64	12	2-33/64	3	1-27/64	3-31/64	1-27/32	1.220	0.500	1/2-13	202-10	TPT204	0.79
204		20	99	27.5		64	76	36	88	47	31.0	12.7	M16	204		0.36
204-12	3/4													204-12		
SSUCTPT205		25												SSUC205		
205-14	7/8		3-57/64	1-5/64	12	2-33/64	3	1-27/64	3-31/64	1-27/32	1.343	0.563	1/2-13	205-14	TPT205	0.81
205-15	15/16		99	27.5		64	76	36	88	47	34.1	14.3	M16	205-15		0.37
205-16	1													205-16		
SSUCTPT206		30												SSUC206		
206-17	1-1/16													206-17		
206-18	1-1/8		4-59/64	1-23/64	12	3	3-1/2	1-37/64	4	2-31/64	1.550	0.626	5/8-11	206-18	TPT206	1.34
206-19	1-3/16		125	34.5		76	89	40	102	63	38.1	15.9	M16	206-19		0.61
206-20	1-1/4S													206-20		
SSUCTPT207		35												SSUC207		
207-20	1-1/4													207-20		
207-21	1-5/16		4-59/64	1-23/64	12	3	3-1/2	1-37/64	4	2-31/64	1.689	0.689	5/8-11	207-21	TPT207	1.65
207-22	1-3/8		125	34.5		76	89	40	102	63	42.9	17.5	M16	207-22		0.75
207-23	1-7/16													207-23		
SSUCTPT208		40												SSUC208		
208-24	1-1/2		5-1/2	1-23/64	16	3-11/32	4	1-37/64	4-15/32	3-5/32	1.937	0.748	5/8-11	208-24	TPT208	2.22
			140	34.5		85	102	40	114	80	49.2	19.0	M16			1.01
SSUCTPT209		45												SSUC209		
209-26	1-5/8		5-7/8	1-37/64	16	3-35/64	4	1-31/32	4-39/64	3-11/32	1.937	0.748	3/4-10	209-26	TPT209	2.57
209-27	1-11/16		149	40		90	102	50	117	85	49.2	19.0	M20	209-27		1.17
209-28	1-3/4													209-28		
SSUCTPT210		50												SSUC210		
210-30	1-7/8		5-7/8	1-37/64	16	3-35/64	4	1-31/32	4-39/64	3-11/32	2.032	0.748	3/4-10	210-30	TPT210	2.82
210-31	1-15/16		149	40		90	102	50	117	85	51.6	19.0	M20	210-31		1.28
210-32	2S													210-32		