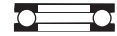


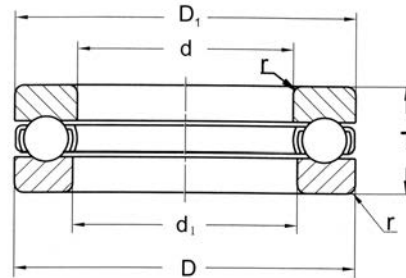


# BALL BEARINGS



## THRUST BALL BEARINGS

51100, 51200 Series



Boundary dimensions (mm)				Basic load ratings N		Limiting speeds RPM		Mass (kg)	Bearing No.
d	D	T	rs min	dynamic Cr	Static Cor	Grease	oil		
10	24	9	0.3	10 000	14 000	6 700	9 500	0.021	<b>51100</b>
	26	11	0.6	12 700	17 100	5 800	8 300	0.030	
12	26	9	0.3	10 300	15 400	6 400	9 200	0.023	<b>51101</b>
	28	11	0.6	13 200	19 000	5 600	8 000	0.034	
15	28	9	0.3	10 500	16 800	6 200	8 800	0.024	<b>51102</b>
	32	12	0.6	16 600	24 800	5 000	7 100	0.046	
17	30	9	0.3	10 800	18 200	6 000	8 500	0.026	<b>51103</b>
	35	12	0.6	17 200	27 300	4 800	6 200	0.054	
20	35	10	0.3	14 200	24 700	5 200	7 500	0.040	<b>51104</b>
	40	14	0.6	22 300	37 500	4 100	5 900	0.061	
25	42	11	0.6	19 600	37 000	4 600	6 500	0.060	<b>51105</b>
	47	15	0.6	27 800	50 500	3 700	5 300	0.111	
30	47	11	0.6	20 400	42 000	4 300	6 200	0.069	<b>51106</b>
	52	16	0.6	29 300	58 000	3 400	4 900	0.139	
35	52	12	0.6	20 400	44 500	3 900	5 600	0.085	<b>51107</b>
	62	18	1.0	39 000	78 000	2 900	4 200	0.215	
40	60	13	0.6	26 900	63 000	3 500	5 000	0.125	<b>51108</b>
	68	19	1.0	47 000	96 500	2 700	3 900	0.276	
45	65	14	0.6	27 000	69 000	3 200	4 600	0.148	<b>51109</b>
	73	20	1.0	48 000	105 000	2 600	3 700	0.317	
50	70	14	0.6	28 800	75 500	3 100	4 500	0.161	<b>51110</b>
	78	22	1.0	48 500	111 000	2 400	3 400	0.376	
55	78	16	0.6	35 000	93 000	2 800	4 000	0.226	<b>51111</b>
	90	25	1.0	69 500	159 000	2 100	3 000	0.606	
60	85	17	1.0	41 500	113 000	2 600	3 700	0.296	<b>51112</b>
	95	26	1.0	73 500	179 000	2 000	2 800	0.676	
65	90	18	1.0	41 500	117 000	2 400	3 500	0.338	<b>51113</b>
	100	27	1.0	75 000	189 000	1 900	2 700	0.767	
70	95	18	1.0	43 000	127 000	2 400	3 400	0.356	<b>51114</b>
	105	27	1.0	76 000	199 000	1 800	2 600	0.793	
75	100	19	1.0	44 500	136 000	2 200	3 200	0.399	<b>51115</b>
	110	27	1.0	77 500	209 000	1 800	2 600	0.874	
80	105	19	1.0	44 500	141 000	2 200	3 100	0.422	<b>51116</b>
	115	28	1.0	77 500	218 000	1 700	2 400	0.916	
85	110	19	1.0	46 000	150 000	2 100	3 000	0.444	<b>51117</b>
	125	31	1.1	78 500	264 000	1 600	2 200	1.250	
90	120	22	1.0	59 500	190 000	1 900	2 700	0.687	<b>51118</b>
	135	35	1.1	117 000	325 000	1 400	2 000	1.700	
100	135	25	1.0	85 000	268 000	1 700	2 400	0.987	<b>51120</b>
110	145	25	1.0	84 000	288 000	1 600	2 300	1.070	<b>51122</b>