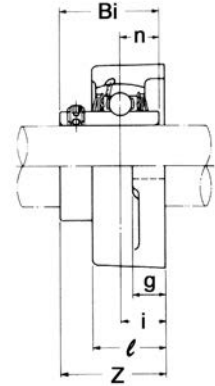
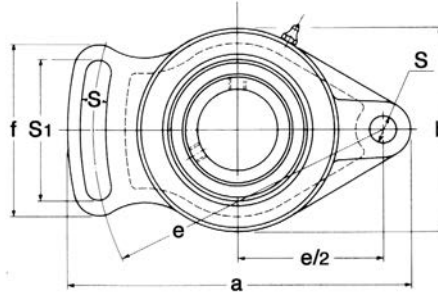




# BEARING UNITS



## ADJUSTABLE FLANGE UNITS UCFA 200 Series Normal Duty Set Screw Locking



Unit No.	Shaft Dia.		Dimensions inch / mm											Bolt Size	Bearing No.	Housing No.	Weight Lbs / kg	
	In.	mm	a	e	i	g	ℓ	S	S1	b	f	Z	Bi					n
UCFA 201-8 202-10	1/2 5/8		3-27/32 98	3-1/16 78	19/32 15	15/32 12	1 25.5	25/64 10	1-9/16 40	2-3/8 60	1-31/32 50	1-5/16 33.3	1.2205 31	0.500 12.7	5/16 M8	UC 201-8 202-10	FA204	1.5 0.7
UCFA 204 204-12	3/4	20	3-27/32 98	3-1/16 78	19/32 15	15/32 12	1 25.5	25/64 10	1-9/16 40	2-3/8 60	1-31/32 50	1-5/16 33.3	1.2205 31	0.500 12.7	5/16 M8	UC 204 204-12	FA204	1.3 0.6
UCFA 205 205-14 205-15 205-16	7/8 15/16 1	25	4-7/8 124	3-25/32 96	19/32 15	9/16 14	1-1/32 26.5	33/64 13	1-15/16 49	2-3/4 70	2-17/32 64	1-23/64 34.7	1.3386 34	0.563 14.3	3/8 M10	UC 205 205-14 205-15 205-16	FA205	1.8 0.8
UCFA 206 206-17 206-18 206-19 206-20	1-1/16 1-1/8 1-3/16 1-1/4S	30	5-9/16 141	4-17/32 115	45/64 18	9/16 14	1-7/32 31	33/64 13	2-3/32 53	3-5/32 80	2-11/16 68	1-37/64 40.2	1.5000 38.1	0.626 15.9	3/8 M10	UC 206 206-17 206-18 206-19 206-20	FA206	2.6 1.2
UCFA 207 207-20 207-21 207-22 207-23	1-1/4 1-5/16 1-3/8 1-7/16	35	6-3/32 155	5-1/32 128	25/32 20	5/8 16	1-11/32 34	19/32 15	2-3/8 60	3-17/32 90	2-15/16 75	1-25/32 45.4	1.6890 42.9	0.689 17.5	7/16 M12	UC 207 207-20 207-21 207-22 207-23	FA207	3.3 1.5
UCFA 208 208-24 208-25	1-1/2 1-9/16	40	6-23/32 171	5-19/32 142	55/64 22	5/8 16	1-13/32 36	19/32 15	2-23/32 69	3-15/16 100	3-5/16 84	2-1/16 52.2	1.9370 49.2	0.748 19	1/2 M14	UC 208 208-24 208-25	FA208	4.0 1.8
UCFA 209 209-26 209-27 209-28	1-5/8 1-11/16 1-3/4	45	7-1/16 179	5-3/4 146	55/64 22	23/32 18	1-1/2 38	43/64 17	2-27/32 72	4-11/32 110	3-15/32 88	2-1/16 52.2	1.9370 49.2	0.748 19	1/2 M14	UC 209 209-26 209-27 209-28	FA209	4.9 2.2
UCFA 210 210-30 210-31 210-32	1-7/8 1-15/16 2S	50	7-7/16 189	6-3/32 155	55/64 22	23/32 18	1-9/16 40	43/64 17	2-15/16 75	4-17/32 115	3-5/8 92	2-5/32 54.6	2.0315 51.6	0.748 19	1/2 M14	UC 210 210-30 210-31 210-32	FA210	5.7 2.6