



# BEARING UNITS

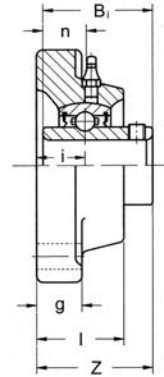
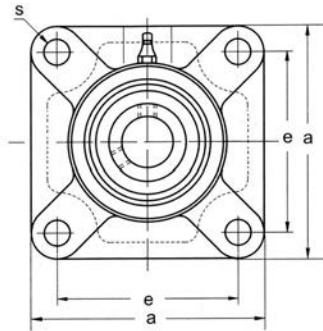


## FOUR BOLT FLANGE UNITS

### UCF200 Series

Normal Duty

Set Screw Locking



Unit No.	Shaft Dia.		Dimensions inch / mm								Bolt Size	Bearing No.	Housing No.	Weight Lbs kg	
	In.	mm	a	e	i	g	l	s	z	Bi					n
UCF 201-8 202-10 204 204-12	1/2 5/8 3/4	20	3-25/64 86.1	2-1/2 63.5	19/32 15.1	7/16 11.1	1 25.4	15/32 11.9	1.5/16 33.3	1.220 31.0	0.500 12.7	3/8 M10	UC 201-8 202-10 204 204-12	F204	1.54 0.70
UCF 205 205-14 205-15 205-16	7/8 15/16 1	25	3-3/4 95.3	2-3/4 69.9	5/8 15.9	1/2 12.7	1-1/16 27.0	15/32 11.9	1-13/32 35.7	1.339 34.0	0.563 14.3	3/8 M10	UC 205 205-14 205-15 205-16	F205	1.76 0.80
UCF 206 206-17 206-18 206-19 206-20	1-1/16 1-1/8 1-3/16 1-1/4S	30	4-1/4 108.0	3-9/32 83.3	23/32 18.3	1/2 12.7	1-1/4 31.8	15/32 11.9	1-37/64 40.1	1.500 38.1	0.626 15.9	3/8 M10	UC 206 206-17 206-18 206-19 206-20	F206	2.20 1.00
UCF 207 207-20 207-21 207-22 207-23	1-1/4 1-5/16 1-3/8 1-7/16	35	4-19/32 116.7	3-5/8 92.1	3/4 19.1	19/32 15.1	1-11/32 34.1	9/16 14.3	1-3/4 44.5	1.689 42.9	0.689 17.5	7/16 M12	UC 207 207-20 207-21 207-22 207-23	F207	3.08 1.40
UCF 208 208-24 208-25	1-1/2 1-9/16	40	5-1/8 130.2	4-1/64 102.0	13/16 20.6	19/32 15.1	1-13/32 35.7	5/8 15.9	2-1/64 51.2	1.937 49.2	0.748 19.0	1/2 M14	UC 208 208-24 208-25	F208	3.96 1.80
UCF 209 209-26 209-27 209-28	1-5/8 1-11/16 1-3/4	45	5-13/32 137.3	4-1/8 104.8	7/8 22.2	5/8 15.9	1-1/2 38.1	5/8 15.9	2-1/16 52.4	1.937 49.2	0.748 19.0	1/2 M14	UC 209 209-26 209-27 209-28	F209	4.84 2.20
UCF 210 210-30 210-31 210-32	1-7/8 1-15/16 2S	50	5-5/8 142.9	4-3/8 111.1	7/8 22.2	5/8 15.9	1-9/16 39.7	5/8 15.9	2-5/32 54.8	2.031 51.6	0.748 19.0	1/2 M14	UC 210 210-30 210-31 210-32	F210	5.28 2.40
UCF 211 211-32 211-34 211-35	2 2-1/8 2-3/16	55	6-3/8 161.9	5-1/8 130.2	31/32 24.6	23/32 18.3	1-11/16 42.9	3/4 19.1	2-9/32 57.9	2.187 55.5	0.874 22.2	5/8 M16	UC 211 211-32 211-34 211-35	F211	7.92 3.60
UCF 212 212-36 212-37 212-38 212-39	2-1/4 2-5/16 2-3/8 2-7/16	60	6-7/8 174.6	5-5/8 142.9	1-3/16 30.2	23/32 18.3	1-7/8 47.6	3/4 19.1	2-45/64 68.7	2.563 65.1	1.000 25.4	5/8 M16	UC 212 212-36 212-37 212-38 212-39	F212	9.68 4.40
UCF 213 213-40 213-41	2-1/2 2-9/16	65	7-3/8 187.3	5-55/64 148.8	1-3/16 30.2	7/8 22.2	1-31/32 50.0	3/4 19.1	2-3/4 69.9	2.563 65.1	1.000 25.4	5/8 M16	UC 213 213-40 213-41	F213	12.10 5.50
UCF 214 214-42 214-43 214-44	2-5/8 2-11/16 2-3/4	70	7-19/32 192.9	5-31/32 151.6	1-1/4 31.8	7/8 22.2	2-1/8 54.0	3/4 19.1	2-31/32 75.4	2.937 74.6	1.189 30.2	5/8 M16	UC 214 214-42 214-43 214-44	F214	13.42 6.10
UCF 215 215-45 215-46 215-47 215-48	2-13/16 2-7/8 2-15/16 3	75	7-7/8 200.0	6-1/4 158.8	1-11/32 23.41	7/8 22.2	2-7/32 56.4	3/4 19.1	3-3/32 78.6	3.063 77.8	1.311 33.3	5/8 M16	UC 215 215-45 215-46 215-47 215-48	F215	15.18 6.90