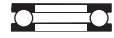


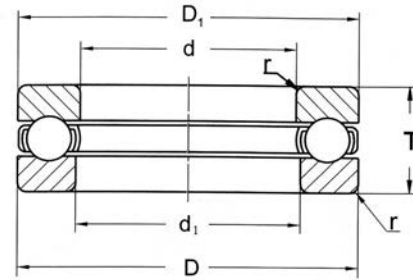


BALL BEARINGS



THRUST BALL BEARINGS

51100, 51200 Series



Boundary dimensions (mm)				Basic load ratings N		Limiting speeds RPM		Mass (kg)	Bearing No.
d	D	T	rs min	dynamic Cr	Static Cor	Grease	oil		
10	24	9	0.3	10 000	14 000	6 700	9 500	0.021	51100 51200
	26	11	0.6	12 700	17 100	5 800	8 300	0.030	
12	26	9	0.3	10 300	15 400	6 400	9 200	0.023	51101 51201
	28	11	0.6	13 200	19 000	5 600	8 000	0.034	
15	32	12	0.6	16 600	24 800	5 000	7 100	0.046	51202
17	30	9	0.3	10 800	18 200	6 000	8 500	0.026	51103 51203
	35	12	0.6	17 200	27 300	4 800	6 200	0.054	
20	40	14	0.6	22 300	37 500	4 100	5 900	0.061	51204
	42	11	0.6	19 600	37 000	4 600	6 500	0.060	
25	47	15	0.6	27 800	50 500	3 700	5 300	0.111	51105 51205
	47	11	0.6	20 400	42 000	4 300	6 200	0.069	
30	52	16	0.6	29 300	58 000	3 400	4 900	0.139	51206
	52	12	0.6	20 400	44 500	3 900	5 600	0.085	
35	62	18	1.0	39 000	78 000	2 900	4 200	0.215	51207
	60	13	0.6	26 900	63 000	3 500	5 000	0.125	
40	68	19	1.0	47 000	96 500	2 700	3 900	0.276	51108 51208
	65	14	0.6	27 000	69 000	3 200	4 600	0.148	
45	73	20	1.0	48 000	105 000	2 600	3 700	0.317	51209
	70	14	0.6	28 800	75 500	3 100	4 500	0.161	
50	78	22	1.0	48 500	111 000	2 400	3 400	0.376	51110 51210
	78	16	0.6	35 000	93 000	2 800	4 000	0.226	
60	85	17	1.0	41 500	113 000	2 600	3 700	0.296	51112 51212
	95	26	1.0	73 500	179 000	2 000	2 800	0.676	
65	90	18	1.0	41 500	117 000	2 400	3 500	0.338	51113 51213
	100	27	1.0	75 000	189 000	1 900	2 700	0.767	
70	95	18	1.0	43 000	127 000	2 400	3 400	0.356	51114
75	100	19	1.0	44 500	136 000	2 200	3 200	0.399	51115 51215
	110	27	1.0	77 500	209 000	1 800	2 600	0.874	
80	105	19	1.0	44 500	141 000	2 200	3 100	0.422	51116 51216
	115	28	1.0	77 500	218 000	1 700	2 400	0.916	
85	125	31	1.1	78 500	264 000	1 600	2 200	1.250	51217
90	120	22	1.0	59 500	190 000	1 900	2 700	0.687	51118
100	135	25	1.0	85 000	268 000	1 700	2 400	0.987	51120
110	145	25	1.0	84 000	288 000	1 600	2 300	1.070	51122