

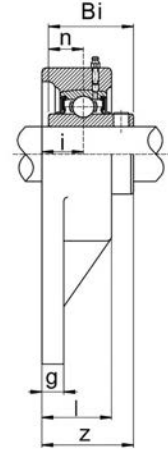
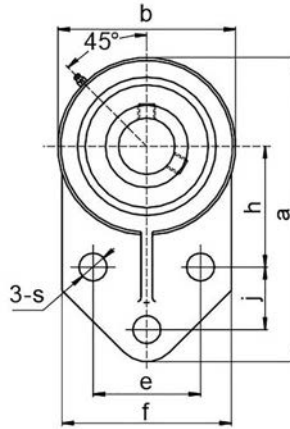


CORROSION RESISTANT PRODUCTS



STAINLESS STEEL FLANGE BRACKET - Stainless Steel Insert SSUCFB 200 Series

Normal Duty
Set Screw Locking
Inch Dimension



Unit No.	Shaft Dia.		Dimensions inch / mm														Bolt Size	Bearing No.	Housing No.	Weight Lbs kg
	In.	mm	a	h	e	j	i	g	l	s	b	f	z	Bi	n					
SSUCFB201-8	1/2																	SSUC201-8		
202-10	5/8		4-1/4	1-11/16	1-1/2	7/8	5/8	5/16	1	25/64	2-31/64	2-23/64	1-11/32	1.220	0.500	5/16	202-10	SSFB204	1.28	
204		20	108	42.9	38.1	22.2	15.9	7.9	25.4	9.9	63.1	59.9	34.1	31.0	12.7	M8	204		0.58	
204-12	3/4																	204-12		
SSUCFB205		25																SSUC205		
205-14	7/8		4-5/8	1-13/16	1-5/8	1-1/8	21/32	3/8	1-9/64	25/64	2-3/4	2-23/64	1-29/64	1.343	0.563	5/16	205-14	SSFB205	1.63	
205-15	15/16		117.5	46.0	41.3	28.6	16.7	9.5	29.0	9.9	66.9	63.9	36.9	34.1	14.3	M8	205-15		0.74	
205-16	1																	205-16		
SSUCFB206		30																SSUC206		
206-17	1-1/16																	206-17		
206-18	1-1/8		5-25/64	2-1/16	1-7/8	1-1/4	3/4	3/8	1-1/4	25/64	3-17/64	2-3/4	1-5/8	1.500	0.626	5/16	206-18	SSFB206	2.40	
206-19	1-3/16		136.9	52.4	47.6	31.8	19.1	9.5	31.8	9.9	82.9	69.9	41.3	38.1	15.9	M8	206-19		1.09	
206-20	1-1/4S																	206-20		
SSUCFB207		35																SSUC207		
207-20	1-1/4																	207-20		
207-21	1-5/16		6-9/64	2-3/8	2	1-1/4	13/16	17/32	1-29/64	33/64	3-3/4	3-1/4	1-53/64	1.689	0.689	3/8	207-21	SSFB207	3.61	
207-22	1-3/8		156.0	60.3	50.8	31.8	20.6	13.5	36.9	13.1	95.3	82.6	46.4	42.9	17.5	M10	207-22		1.64	
207-23	1-7/16																	207-23		
SSUCFB208		40																SSUC208		
208-24	1-1/2		6-29/64	2-23/64	1-31/32	1-39/64	13/16	5/8	1-11/32	7/16	3-15/16	3-5/64	2-1/64	1.937	0.748	3/8	208-24	SSFB208	5.04	
208-25	1-9/16		163.9	59.9	50.0	40.9	20.6	15.9	34.1	11.1	100.0	78.2	51.2	49.2	19.0	M10	208-25		2.29	
SSUCFB209		45																SSUC209		
209-26	1-5/8		6-27/32	2-9/16	2-1/8	1-11/16	13/16	23/32	1-11/32	7/16	4-11/64	3-5/32	2-1/64	1.937	0.748	3/8	209-26	SSFB209	5.70	
209-27	1-11/16		173.8	65.1	54.0	42.9	20.6	18.3	34.1	11.1	106.0	80.2	51.2	49.2	19.0	M10	209-27		2.59	
209-28	1-3/4																	209-28		
SSUCFB210		50																SSUC210		
210-30	1-7/8		7-33/64	2-15/16	2-3/4	1-5/8	13/16	1/2	1-1/2	33/64	4-41/64	4-1/64	2-7/64	2.032	0.748	3/8	210-30	SSFB210	6.91	
210-31	1-15/16		190.9	74.6	69.9	41.3	20.6	12.7	38.1	13.1	117.9	102.0	53.6	51.6	19.0	M10	210-31		3.14	
210-32	2S																	210-32		