

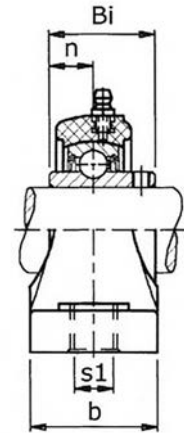
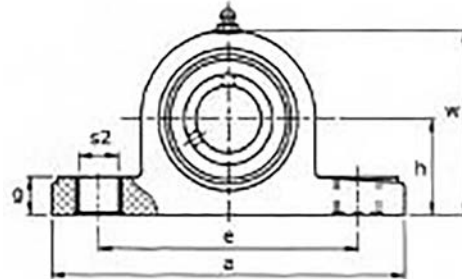


CORROSION RESISTANT PRODUCTS



STAINLESS STEEL PILLOW BLOCK - Stainless Steel Insert SSUCP 200 Series

Solid Base
Normal Duty
Set Screw Locking



Unit No.	Shaft Dia.		Dimensions inch / mm										Bolt Size	Bearing No.	Housing No.	Weight Lbs / kg		
	In.	mm	h	a	e	b	S1	S2	g	w	Bi	n						
SSUCP201-8	1/2																	
202-10	5/8	20	1-5/16	5	3-3/4	1-1/2	1/2	11/16	19/32	2-9/16	1.221	0.500	3/8	SSUC201-8	202-10	SSP204	1.91	
204			33.3	127.0	95.3	38.1	12.7	17.5	15.1	65.1	31.0	12.7	M10	204			0.87	
204-12	3/4													204-12				
SSUCP205		25												SSUC205				
205-14	7/8		1-7/16	5-33/64	4-1/8	1-1/2	1/2	11/16	5/8	2-3/4	1.343	0.563	3/8	205-14	SSP205		2.07	
205-15	15/16		36.5	140.1	104.8	38.1	12.7	17.5	15.9	69.9	34.1	14.3	M10	205-15			0.94	
205-16	1													205-16				
SSUCP206		30												SSUC206				
206-17	1-1/16													206-17				
206-18	1-1/8		1-11/16	6-1/2	4-49/64	1-7/8	5/8	13/16	23/32	3-9/32	1.500	0.626	1/2	206-18	SSP206		3.54	
206-19	1-3/16		42.9	165.1	121.0	47.6	15.9	20.6	18.3	83.3	38.1	15.9	M12	206-19			1.61	
206-20	1-1/4S													206-20				
SSUCP207		35												SSUC207				
207-20	1-1/4													207-20				
207-21	1-5/16		1-7/8	6-9/16	5	1-7/8	5/8	7/8	3/4	3-11/16	1.689	0.689	1/2	207-21	SSP207		4.18	
207-22	1-3/8		47.6	166.7	127.0	47.6	15.9	22.2	19.1	93.7	42.9	17.5	M12	207-22			1.90	
207-23	1-7/16													207-23				
SSUCP208		40												SSUC208				
208-24	1-1/2		1-15/16	7-1/4	5-25/64	2-1/8	9/16	7/8	3/4	3-15/16	1.937	0.748	1/2	208-24	SSP208		5.41	
208-25	1-9/16		49.2	184.0	136.9	54.0	15.0	22.2	19.1	100.0	49.2	19.0	M12	208-25			2.46	
SSUCP209		45												SSUC209				
209-26	1-5/8		2-1/8	7-15/32	5-3/4	2-1/8	9/16	13/16	25/32	4-19/64	1.937	0.748	1/2	209-26	SSP209		6.10	
209-27	1-11/16		54.0	189.7	146.1	54.0	15.0	20.6	19.8	109.1	49.2	19.0	M14	209-27			2.77	
209-28	1-3/4													209-28				
SSUCP210		50												SSUC210				
210-30	1-7/8		2-1/4	8-1/8	6-1/4	2-23/64	11/16	15/16	7/8	4-1/2	2.032	0.748	5/8	210-30	SSP210		6.99	
210-31	1-15/16		57.2	206.4	158.8	59.9	17.5	23.8	22.2	114.3	51.6	19.0	M16	210-31			3.18	
210-32	2S													210-32				
SSUCP211		55												SSUC211				
211-32	2		2-1/2	8-17/32	6-7/8	2-3/8	3/4	15/16	7/8	4-15/16	2.189	0.874	5/8	211-32	SSP211		7.40	
			63.5	216.7	174.6	60.3	19.1	23.8	22.2	125.4	55.6	22.2	M18				3.36	