

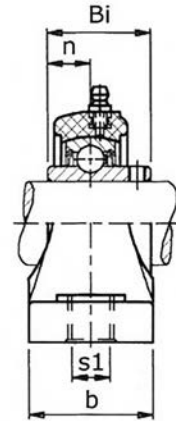
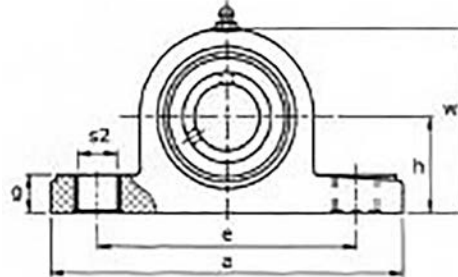


CORROSION RESISTANT PRODUCTS



THERMOPLASTIC PILLOW BLOCK - Stainless Steel Insert SSUCTPP 200 Series

Solid Base
Normal Duty
Set Screw Locking



Unit No.	Shaft Dia.		Dimensions inch / mm										Bolt Size	Bearing No.	Housing No.	Weight Lbs kg		
	In.	mm	h	a	e	b	S1	S2	g	w	Bi	n						
SSUCTPP201-8	1/2																	
202-10	5/8	20	1-5/16	5	3-3/4	1-1/2	7/16	9/16	9/16	2-37/64	1.221	0.500	3/8	SSUC201-8	TPP204	0.68		
204			33.3	127.0	95.3	38.1	11.1	14.3	14.3	65.5	31.0	12.7	M8	202-10		0.31		
204-12	3/4													204-12				
SSUCTPP205		25												SSUC205				
205-14	7/8		1-7/16	5-9/16	4-1/8	1-1/2	7/16	9/16	37/64	2-51/64	1.343	0.563	3/8	205-14	TPP205	0.75		
205-15	15/16		36.5	141.3	104.8	38.1	11.1	14.3	14.7	71.0	34.1	14.3	M8	205-15		0.34		
205-16	1													205-16				
SSUCTPP206		30												SSUC206				
206-17	1-1/16													206-17				
206-18	1-1/8		1-11/16	6-13/32	4-11/16	1-13/16	9/16	23/32	45/64	3-5/16	1.500	0.626	1/2	206-18	TPP206	1.25		
206-19	1-3/16		42.9	162.7	119.1	46.0	14.3	18.3	17.9	84.1	38.1	15.9	M10	206-19		0.57		
206-20	1-1/4S													206-20				
SSUCTPP207		35												SSUC207				
207-20	1-1/4													207-20				
207-21	1-5/16		1-7/8	6-5/8	5	1-7/8	9/16	23/32	23/32	3-23/32	1.689	0.689	1/2	207-21	TPP207	1.65		
207-22	1-3/8		47.6	168.3	127.0	47.6	14.3	18.3	18.3	94.5	42.9	17.5	M10	207-22		0.75		
207-23	1-7/16													207-23				
SSUCTPP208		40												SSUC208				
208-24	1-1/2		1-15/16	7-1/4	5-25/64	2-1/8	9/16	23/32	49/64	3-31/32	1.937	0.748	1/2	208-24	TPP208	2.20		
208-25	1-9/16		49.2	184.2	136.9	54.0	14.3	18.3	19.4	100.8	49.2	19.0	M10	208-25		1.00		
SSUCTPP209		45												SSUC209				
209-26	1-5/8		2-1/8	7-9/16	5-3/4	2-1/8	21/32	25/32	29/32	4-11/64	1.937	0.748	1/2	209-26	TPP209	2.58		
209-27	1-11/16		54.0	192.1	146.1	54.0	16.7	19.8	23.0	106.0	49.2	19.0	M16	209-27		1.17		
209-28	1-3/4													209-28				
SSUCTPP210		50												SSUC210				
210-30	1-7/8		2-1/4	8-1/8	6-1/4	2-3/8	21/32	25/32	29/32	4-1/2	2.032	0.748	5/8	210-30	TPP210	2.80		
210-31	1-15/16		57.2	206.4	158.8	60.3	16.7	19.8	23.0	114.3	51.6	19.0	M16	210-31		1.27		
210-32	2S													210-32				