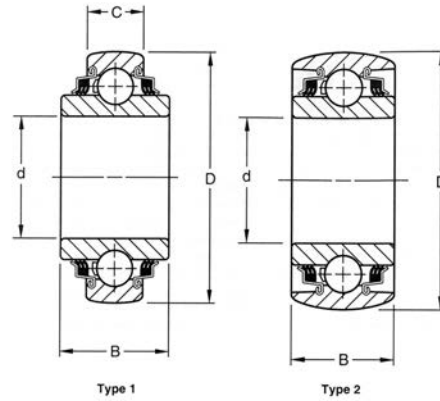
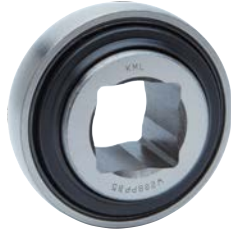




DISC HARROW BALL BEARINGS TRIPLE LIP SEAL Series

Non-Relubricatable Type
Spherical O.D.



SQUARE BORE											
Unit No.	Type	Shaft size	Outside Diameter D	tolerance +0.000" to minus	Ring Width +0.000,-0.005 +0.00,-12 mm		Static Load Rating Cor		Dynamic Load Rating Cr		Weight
					B Inner	C Outer	lbf	N	lbf	N	
					In. mm	In. mm					
W208PPB13	1	7/8	3.1496	0.0005	1.438	0.709	4 500	19 900	8 300	36 800	1.62 0.735
			22.2	80	0.013	36.53					
W208PPB11	1	7/8	3.4280	0.0005	1.438	1.188	4 500	19 900	8 300	36 800	2.05 0.930
			22.2	87	0.013	36.53					
W208PPB6	1	1	3.1496	0.0005	1.438	0.709	4 500	19 900	8 300	36 800	1.59 0.721
			25.4	80	0.013	36.53					
W208PPB5	1	1-1/8	3.1496	0.0005	1.438	0.709	4 500	19 900	8 300	36 800	1.47 0.667
			28.6	80	0.013	36.53					
W208PPB8	1	1-1/8	3.1496	0.0005	1.438	1.188	4 500	19 900	8 300	36 800	1.65 0.750
			28.6	80	0.013	36.53					
W208PPB12	1	1-1/8	3.375	0.0005	1.438	1.188	4 500	19 900	8 300	36 800	1.87 0.850
			28.6	85.75	0.013	36.53					
W209PPB5	2	1-1/4	3.3465	0.0006	1.438	1.188	4 550	20 200	8 300	36 800	1.75 0.794
			31.8	85	0.015	36.53					
W210PPB4	2	1-1/8	3.5433	0.0006	1.188	1.188	5 200	23 000	9 000	39 900	2.11 0.957
			28.6	90	0.015	30.18					
W210PPB6	1	1-1/8	3.5433	0.0006	1.438	1.188	5 200	23 000	9 000	39 900	2.25 1.021
			28.6	90	0.015	36.53					
W211PPB3	2	1-1/2	3.9370	0.0006	1.312	1.312	6 550	29 000	11 000	48 800	2.66 1.207
			38.1	100	0.015	33.34					
W211PPB6	2	1-1/2	4.1250	0.0006	1.750	1.438	6 550	29 000	11 000	48 800	4.10 1.860
			38.1	105	0.015	44.45					