



BEARING UNITS

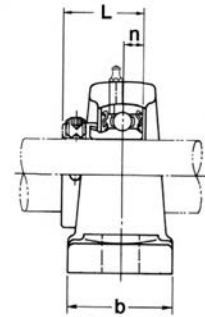
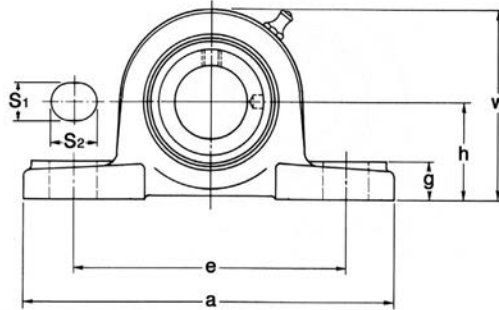


PILLOW BLOCKS - Low Shaft Height

SAAK 200 Series

Normal Duty

Eccentric Collar Locking



Unit No.	Shaft Dia.		Dimensions inch / mm										Bolt Size	Bearing No.	Housing No.	Weight Lbs kg
	In.	mm	h	a	e	b	S1	S2	g	w	L	n				
SAAK 204 204-12	3/4	20	1-1/4 31.8	5 127.0	3-25/32 96.0	1-39/64 40.9	1/2 12.7	5/8 15.9	9/16 14.3	2-15/32 62.7	1.220 31.0	0.281 7	3/8 M10	SA 204 204-12	AK204	1.10 0.50
SAAK 205 205-14 205-15 205-16	7/8 15/16 1	25	1-5/16 33.3	5-1/2 139.7	4-1/8 104.8	1-49/64 44.8	1/2 12.7	3/4 19.1	19/32 15.1	2-5/8 66.7	1.220 31.0	0.295 7.5	3/8 M10	SA 205 205-14 205-15 205-16	AK205	1.54 0.70
SAAK 206 206-17 206-18 206-19 206-20	1-1/16 1-1/8 1-3/16 1-1/4S	30	1-9/16 39.7	6-5/16 160.3	4-49/64 121.0	1-3/4 44.5	9/16 14.3	3/4 19.1	5/8 15.9	3-1/8 79.4	1.406 35.7	0.315 8	1/2 M14	SA 206 206-17 206-18 206-19 206-20	AK206	2.64 1.20
SAAK 207 207-20 207-21 207-22 207-23	1-1/4 1-5/16 1-3/8 1-7/16	35	1-13/16 46.0	6-9/16 166.7	5 127.0	1-7/8 47.6	19/32 15.1	3/4 19.1	21/32 16.7	3-9/16 90.5	1.531 38.9	0.335 8.5	1/2 M14	SA 207 207-20 207-21 207-22 207-23	AK207	3.08 1.40
SAAK 208 208-24 208-25	1-1/2 1-9/16	40	1-15/16 49.2	7-3/32 180.2	5-11/32 135.7	2-1/16 52.4	19/32 15.1	13/16 20.6	23/32 18.3	3-55/64 98.0	1.719 43.7	0.354 9	1/2 M14	SA 208 208-24 208-25	AK208	4.19 1.90
SAAK 209 209-26 209-27 209-28	1-5/8 1-11/16 1-3/4	45	2-1/16 52.4	7-7/16 188.9	5-3/4 146.1	2-1/8 54.0	19/32 15.1	13/16 20.6	25/32 19.8	4-1/8 104.8	1.719 43.7	0.374 9.5	1/2 M14	SA 209 209-26 209-27 209-28	AK209	4.62 2.10
SAAK 210 210-30 210-31 210-32	1-7/8 1-15/16 2S	50	2-3/16 55.6	8-1/32 204.0	6-1/4 158.8	2-1/4 57.2	3/4 19.1	7/8 22.2	13/16 20.6	4-25/64 111.5	1.719 43.7	0.394 10	5/8 M16	SA 210 210-30 210-31 210-32	AK210	5.06 2.30