



# BEARING UNITS

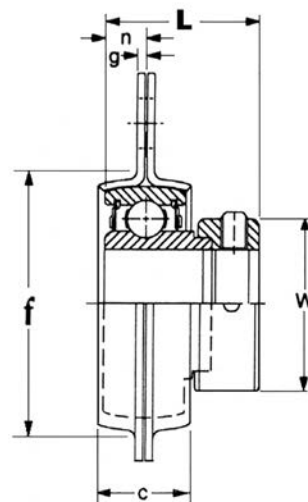
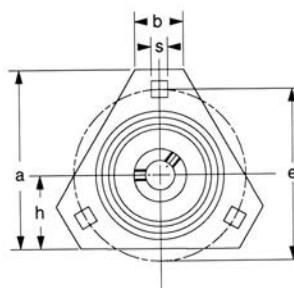


## TRIANGLE FLANGETTE UNITS - Three Bolt Mount

### SAPFT 200 Series

Normal Duty

Eccentric Collar Locking



Unit No.	Shaft Dia.		Dimensions inch / mm											Bolt Size	Bearing No.	Housing No.	Weight Lbs kg
			a	e	h	s	c	g	b	f	L	n	W				
SAPFT 201-8 202-10	1/2 5/8		2-23/32 69.1	2-33/64 63.9	1-3/16 30.2	9/32 7.1	9/16 14.3	5/64 2.0	13/16 20.6	1-59/64 48.8	1.126 28.6	0.236 6.0	1-1/8 28.6	1/4 M6	SA 201-8 202-10	PFT203	0.57 0.26
SAPFT 204 204-12	3/4	20	2-63/64 75.8	2-51/64 71.0	1-19/64 32.9	11/32 8.7	5/8 15.9	3/32 2.4	1-1/16 27.0	2-7/32 56.4	1.220 31.0	0.276 7.0	1-1/4 31.8	5/16 M8	SA 204 204-12	PFT204	0.59 0.27
SAPFT 205 205-14 205-15 205-16	7/8 15/16 1	25	3-1/8 79.4	2-63/64 75.8	1-3/8 34.9	11/32 8.7	21/32 16.7	3/32 2.4	1-3/32 27.8	2-19/32 65.9	1.220 31.0	0.295 7.5	1-1/2 38.1	5/16 M8	SA 205 205-14 205-15 205-16	PFT205	0.66 0.30
SAPFT 206 206-17 206-18 206-19 206-20	1-1/16 1-1/8 1-3/16 1-1/4S	30	3-11/16 93.7	3-35/64 90.1	1-1/2 38.1	13/32 10.3	21/32 16.7	7/64 2.8	1-1/8 28.6	2-51/64 71.0	1.406 35.7	0.315 8.0	1-3/4 44.5	3/8 M10	SA 206 206-17 206-18 206-19 206-20	PFT206	0.88 0.40
SAPFT 207 207-20 207-21 207-22 207-23	1-1/4 1-5/16 1-3/8 1-7/16	35	4-11/64 106.0	3-15/16 100.0	1-3/4 44.5	13/32 10.3	3/4 19.1	7/64 2.8	1-1/4 31.8	3-3/16 81.0	1.531 38.9	0.335 8.5	2-3/16 55.6	3/8 M10	SA 207 207-20 207-21 207-22 207-23	PFT207	1.54 0.70

Standard Stock Item is Zinc Plated.